

JUST A GENTLE TOUCH...



**REMOTE  
CONTROL**



**SILENT  
TOUCH**

**OFFICE AUTOMATION**



**HOTEL AUTOMATION**



**HOME AUTOMATION**

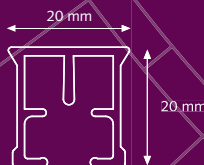


## PRODUCT INFORMATION

- Touch Impulse Technology, gently pulling the curtain to open or close (standard feature).
- Integrated Emergency Control ensures manual operation of the curtain in case of power failure.
- Modular motor, different modules can be attached for various control options: Radio Frequency, Wall Switch, Infrared, Domotica, Building/Hotel Automation, Serial Communication, Z-wave, etc.
- Ultra Silent motor, speed: 15 cm/sec.
- Full automatic setting of the limits.
- Programming of intermediate positions possible.
- Touch Impulse sensitivity adjustable in 2 positions.
- Stack-back position programmable to every desired setting.
- Touch Impulse function can be switched on and off.
- 24 Volt DC Power Input, by using the 230 or 115 Volt AC adaptor (white).
- Motor pulley connects motor and FMS track.
- All KS brackets applicable.
- Torque: 1.5 Nm.
- Noise level Shuttle motor < 40 dB(A)
- Variable velocity with slow start and slow stop.
- Dimensions Motor: 70 x 50 x 235 mm  
(2.76 x 1.97 x 9.25 inch)
- Adaptor: 50 x 110 x 30 mm  
(1.97 x 4.33 x 1.18 inch)

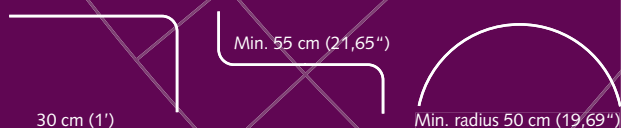
## SPECIFICATIONS TRACK

- Weight: 303 gr / mtr (3.25 ounce / ft.)
- Aluminium Extrusion
- Size: 20 x 20 mm (0.8 x 0.8 inch)
- Scale 1:1



## BENDING / CURVING

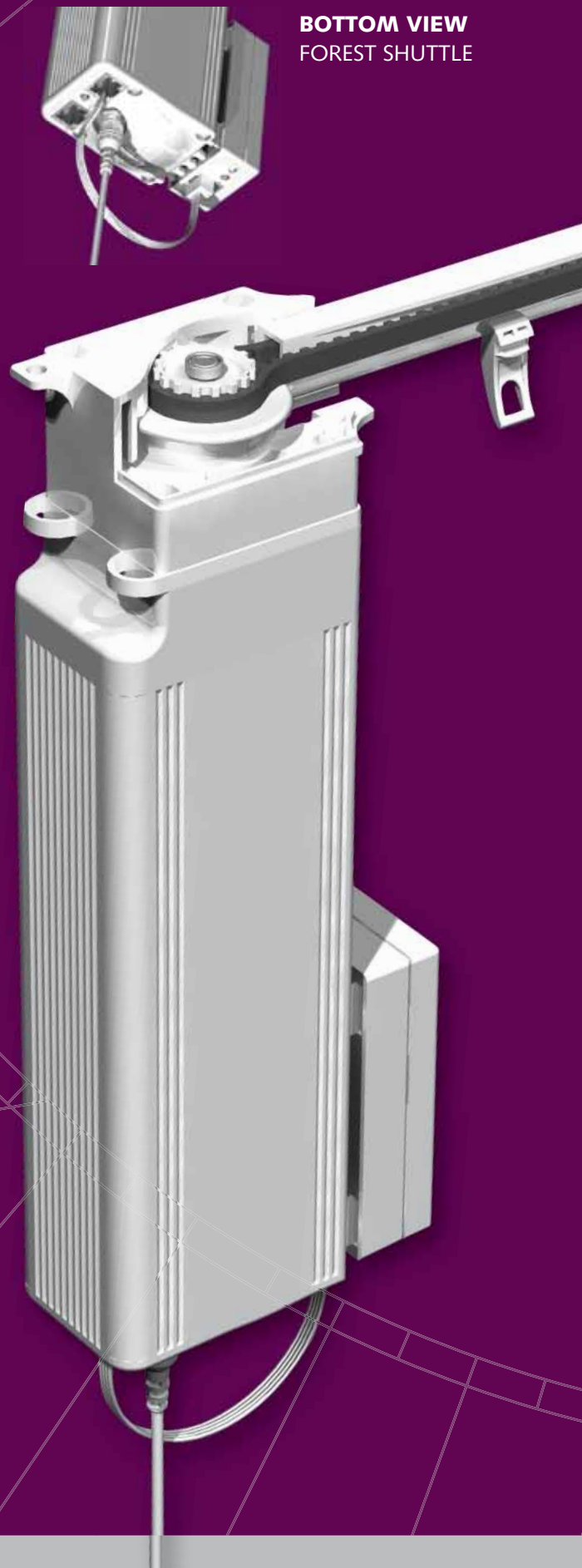
The motor can be used in a track with one or two bends of 90 degrees. The track can be bended and reversed bended with a radius of 20 cm (8"). Continuous curving can be done with the Electric Powered Bender.



## TANDEM APPLICATION

More information is available on request.

**BOTTOM VIEW**  
FOREST SHUTTLE





## CONTROL OPTIONS

### TOUCH IMPULSE TECHNOLOGY



A gentle pull will activate the curtain thanks to the smart Touch Impulse Technology of the motor. Standard feature.

### INTEGRATED EMERGENCY CONTROL



In case of power failure, the curtain can still be moved manually. Standard feature.

### MULTI REMOTE CONTROL



Wireless, with remote control 15-channel. Which also can be used in combination with a wireless wall-switch. Can be operated in groups or individually. Standard a timer function is included.

### Z-WAVE DOMOTICA CONTROL



Wireless Domotics communication with data feedback and automatic routing in a mesh-network environment. Open protocol with "Scene Control".

### SWITCH CONTROL



By using the dry contact port of the motor, you can use the Forest pulse switch. Or any other type of rocker switch.

### INFRARED CONTROL



Infrared (IR) module with infrared remote control. Also possible to program other IR controls on the motor.

### BUILDING AUTOMATION



Possible with dry contact port, by means of the relay interface of the concerned Building Automation System. Individual control per room remains possible.

### HOTEL AUTOMATION



With the two RQ bus ports on the bottom of the motor it is possible to connect more motors. Can be operated centrally, in group or individually.

Detailed schedules on how to program the Forest Shuttle are included with the motor and can be found on our website [www.forestgroup.nl](http://www.forestgroup.nl)

## FOREST PARTNERSHIPS



[www.amx.com](http://www.amx.com)

In Concert Partner.



[www.knx.nl](http://www.knx.nl)

KNX partner



[www.z-wave.com](http://www.z-wave.com)

Z Wave alliance partner



[www.crestron.com](http://www.crestron.com)

I2P partner



**Smart Homes**

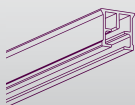
Nationaal Kenniscentrum Domotica & Slim Wonen

[www.smart-homes.nl](http://www.smart-homes.nl)

Smart homes partner

The Forest® Shuttle is compatible with many other Building of Automation systems, thanks to its modular construction. A competitive advantage over the motorized drapery systems in the world!

## FMS TRACK



Aluminium extrusion, powder coated, lubricated.  
Available lengths:  
5,80 m (19')  
7 m (23')

10/bundle  
5101001580  
5101001700

## FMS CARRIER



"Clickable", offset, constructed of UV-resistant plastic.  
10 Carriers on a break-away strip. Can be clicked in after installation.

2510101000  
250/box

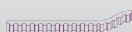
## FMS/CCS/MRS WHEEL CARRIER



The wheel carrier goes smoothly over a splice.

5210101002  
100/box

## FMS TRANSPORT BELT



Toothed belt, to be installed inside the FMS Track.

5105501000  
100 mtr/roll

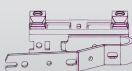
## FMS MASTER CARRIER



**UNDERLAP**  
Multifunctional - arm is reversible for Click on stiffner

5215801010  
15/box

## FMS MASTER CARRIER



**OVERLAP**  
Multifunctional – arm is reversible for Click on stiffner

5215901010  
15/box

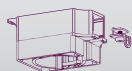
## CLICK ON STIFFNER



Recommended to attach to the FMS Master Carriers, stiffner to be stitched into the curtain.

5116001001  
15/box

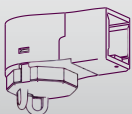
## FMS MOTOR PULLEY



Connects motor with FMS Track.

5103011000  
1/box

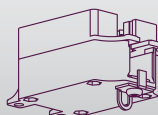
## FMS RETURN PULLEY



Reverses the FMS transport belt in the FMS Track.

5103011100  
1/box

## FMS MOTOR PULLEY UPSIDE DOWN

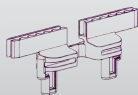


Can be used to place the motor upside down on the FMS track

5103011003  
1/box

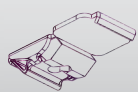


## FMS CONNECTOR



To fix the FMS Master Carrier onto the FMS transport belt. 5103011500  
50/box

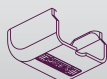
## SMART KLIK CEILING BRACKET



"Klicks" onto track, powder coated. 1018201000  
100/box

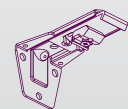
Included Cover Cap 1018201001

## SMART KLIK COVER CAP



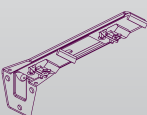
Fit on SK wall and ceiling brackets 1019201000  
100/box

## ADJUSTABLE WALL BRACKET SINGLE



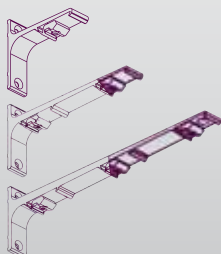
Smart Klick, adjustable single from 7,5 cm (3") to 1020801115  
100/box  
11,5 cm (4,5").

## ADJUSTABLE WALL BRACKET DOUBLE



Smart Klick, adjustable double from 6,5 cm (2,5") to 1020801195  
50/box  
10 cm (4") + 15 cm (6") to 19,5 cm (7,5").

## ALUMINIUM WALL BRACKET



Smart Klick, powder coated. 1020301...

7,5 cm single (3")	20/box
10 cm single (4")	20/box
15 cm double (6")	15/box
20 cm double (8")	15/box
25 cm triple (10")	10/box

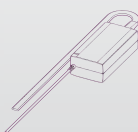
## FOREST SHUTTLE MOTOR 24 VOLT DC



Basic motor with standard Touch Impulse System and Emergency Control. 5231000000  
1/box

Dimensions: 7 x 5 x 23 cm (2.76 x 1.97 x 9.25")

## FOREST ADAPTOR

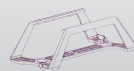


Forest adaptor set complete (eu) incl. wall bracket 5201002002  
1/Box

Forest adaptor set complete (uk) incl. wall bracket 5201002004  
1/box

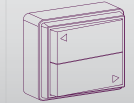
Forest adaptor set complete (usa) incl. wall bracket 5201002005  
1/box

## FOREST WALL BRACKET



**FOR POWER SUPPLY** 5201002001  
1/box

## FOREST PULSE WALL SWITCH



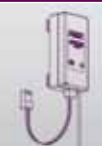
Dimensions: 5201001900  
6,5 x 5,5 x 2,7 cm (2.56 x 2.17 x 1.06") 1/box

## SHUTTLE MULTI RECEIVER/WALL SWITCH



Receiver to be used with Multi remote control. 5201001361  
1/each  
Dimension: 8,5 x 8,5 x 1,5 cm.

## SHUTTLE MULTI RECEIVER KLIK ON



Receiver to be used with Multi remote control. 5201001362  
1/each

## MULTI REMOTE CONTROL



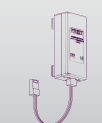
15-channel remote control. Incl. a timer function and wall mount. 1/each  
White 5201001460  
Black 5201006460  
Matt Black 5201006461  
Matt Grey 5201003461

## MULTI WIRELESS WALLSWITCH



2-channel wall switch in combination with Shuttle Multi receiver. 5201001470  
1/each  
Dimension: 8,5 x 8,5 x 1 cm.

## SHUTTLE Z-WAVE MODULE



Receiver to be used with a Z-wave remote control. 5201001750  
1/box

## FOREST Z-WAVE REMOTE CONTROL



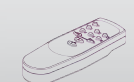
5-channel remote control with scene setting options. 5201001700  
1/box

## SHUTTLE INFRARED MODULE



Cordlength is 60cm. 5201001260  
1/box

## SHUTTLE INFRARED REMOTE CONTROL



6 channel infrared remote control. 5201001250  
1/box